



OF THE FINCH COLLEGE ALUMNI ASSOCIATION FOUNDATION TRUST

JESSICA COSGRAVE AWARDS

TUESDAY, JUNE 2, 2015



PROGRAM

TWENTY FIRST ANNUAL JESSICA COSGRAVE AWARDS
THE FINCH COLLEGE ALUMNI ASSOCIATION FOUNDATION TRUST
TUESDAY, JUNE 2, 2015

HONORING

DR. DIANE KELDER

NANETTE LAMPL AVERY

DONNA MILLER CASEY

SUSAN MAU SOONG

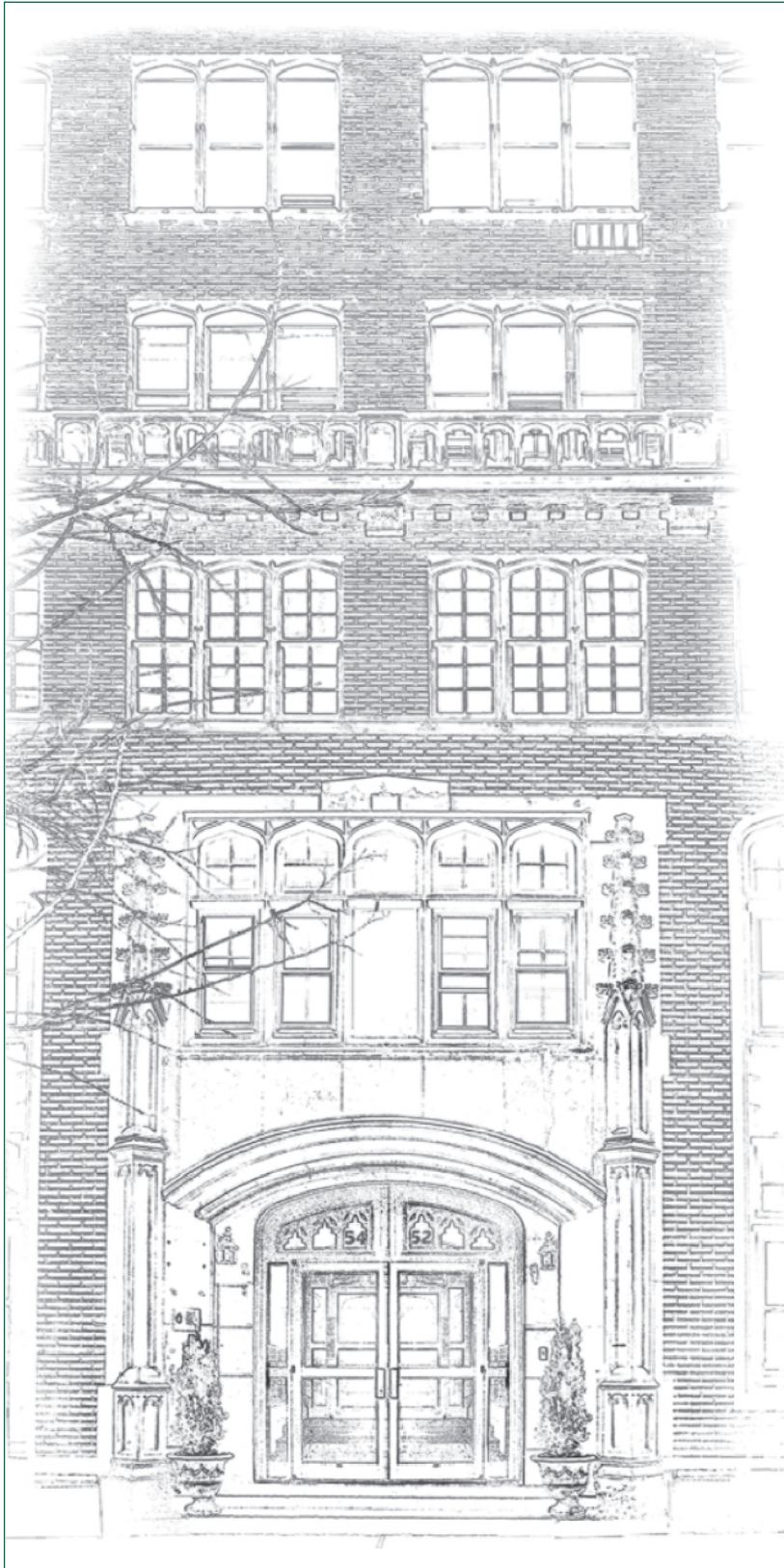
JAMIE LEAMING WATSON

AWARD PRESENTATION
RECEPTION & COCKTAILS
GRAND BALLROOM
6:00 PM

DINNER
DINING ROOM
FOURTH FLOOR
8:00 PM

THE COSMOPOLITAN CLUB
122 EAST 66TH STREET
NEW YORK, NEW YORK 10065

FINCH FACADE



This image was created by Margaret Stein Nakamura (class of '72 and recipient of a Jessica Cosgrave Award in 2007) as an homage to the Finch building at 52-54 East Seventy-Eighth Street. She created the image using a combination of photographs, drawings and computer graphics.



TONIGHT IS A TRIBUTE TO THE FINE EDUCATION PROVIDED BY FINCH!

This evening we salute and honor a Finch College Professor of Art History
and Four Outstanding Finch Graduates

What a momentous 2014-2015 year for the FCAAFT!

In just a few short months - by the end of May - past recipients of the Jessica Cosgrave Award
raised almost \$21,000 to fund the 20/20 Scholarship Fund -
representing \$1,000 for each year FCAAFT has been in existence -

In October, Mr. Louis Stern surprised us with a generous donation of \$100,000 in memory
of his late wife, Freya Moskowitz Stern.

What a wonderful tribute, what a wonderful year!

With your support, five scholars were admitted to Ivy League colleges – Columbia (2), Smith(2), and the
University of Pennsylvania (1) – and one each to New York University, University of Rochester, Ohio State
University, University of Texas, Queens College, William Patterson and Southern New Hampshire University,
truly a privileged line up. These adult women are remarkable and thankfully appreciate our support.

We are grateful to our expanding Board which now includes two scholars who Finch has gifted in recent years.
They are of another generation and with us will move the FCAAFT forward.

The Board and faithful members of the Finch College Alumni Associations still initiate appealing, clever and
profitable small programs throughout the year and have witnessed successful fundraising alumnae events in
New York, Naples and Palm Beach Florida this year.

The Friends of Finch Program has increased three fold. A strong Board along with a team of writers, editors,
photographers, mentors, event planers, fundraisers and those taking superb leadership in coordinating our
scholarship program have made this year an extraordinary success.

The Finch Alumnae Team is enthusiastic, enduring, and dedicated. We thank all of you for your contributions
and support. It makes such a difference and we are so glad to share
this celebration with each of you.

Best Wishes,

Ceil Ainsworth

Sara Arthur

Co-Chairs

Finch College Alumni Association Foundation Trust

FINCH COLLEGE ALUMNI ASSOCIATION FOUNDATION TRUST

954 Lexington Avenue, #183 New York, New York 10021

www.finchcollege.org

DR. DIANE KELDER



Dr. Kelder's expertise as a professor of art history stretches from the College of Staten Island to the Republic of San Marino overlooking Italy's Adriatic Coast. She had college and multiple post-graduate degrees to her credit when she arrived at Finch to teach from 1967 to 1971. In 1966 she received her Ph.D. from Bryn Mawr and the following year at Finch, was impressed with the students and their surroundings.

"I found the students quite well-prepared and everything they needed, such as libraries, private galleries and many museums were close-by," she said. "The students were motivated and smart and they had an excellent museum of their own with fine exhibitions. Robert Manning was director of the Old Masters wing at the Finch College Museum of Art, and Elayne Varian was head of the Contemporary Wing. She looked like she belonged to the Daughters of the

American Revolution, but she was smart and a wonderful director.

"It was a lively time at Finch. The students invited a group of Black Panthers to speak and they also went to Washington, D.C., to protest the Vietnam War."

One of her best students, said Dr. Kelder, was (Dr.) Ronny Cohen. Another outstanding student was Francine LeFrak, who was the guest speaker last year at the 20th anniversary of the Cosgrave Awards. Dr. Kelder and Francine's family have a special bond. She was asked by Francine's father to be the curator of the Samuel J. and Ethel LeFrak Collection. Real estate projects created by renowned developer Samuel LeFrak include LeFrak City in Queens, Battery Park City and Jersey City's Newport community on the Hudson.

"He had a great collection of paintings dating from (Eugene) Delacroix (19th Century) to Andy Warhol," said Dr. Kelder.

Born in New York City, Dr. Kelder grew up in Queens and earned her B.A. in history from Queens College, CUNY (City University of New York). She decided to concentrate on art history for further degrees, which included an M.A. in Social Thought from the University of Chicago where she received a fellowship. There she participated in tutorial discussions led by world scholars: Friedrich von Hayek and Otto von Simson. Hayek, a Nobel Prize winner, was a conservative economist who advocated global capitalism. Simson, for whom Dr. Kelder worked as a research assistant, was an authority on Medieval and Renaissance architectural and art history.

Dr. Kelder taught many years at the College of Staten Island and in the Ph.D. program at the Graduate Center, 365 Fifth Avenue, where CUNY doctoral degrees are granted. She has been Professor Emerita at the center since 2000 and was curator of its art gallery from 2001-08, directing 24 exhibitions plus seven collaborations with the Whitney Museum of American Art. She has an office at the center (the former B. Altman building), across from the Empire State Building. Her writings appear in catalogues in museums on both sides of the Atlantic and she has lectured and presented papers throughout the U.S. and in Europe. She is fluent in French, German and Italian and lives in Rome several months a year.

Her second home is in the heart of Rome, near the Campo de' Fiori, a lively piazza, filled with vegetable and fruit stands during the day, which fold up at night, when bars and restaurants come to life.

"It was very exciting when Woody Allen was filming his movie, 'To Rome With Love,' in the square (2012)," she said. "When I saw the movie I could recognize so many scenes."



L to R: Dr. Kelder, Francine LeFrak at the 2014 Cosgrave Awards dinner.

NANETTE LAMPL AVERY



Not long after earning her Bachelor of Fine Arts at Florida's University of Miami, Nanette was one of only a few women working with construction crews at the Miami Metro Zoo. While majoring in sculpture, she had pursued a specialty in welded steel and foundry work.

"I worked with a design team to make paddocks for the animals look more like natural habitats," she said. "We carved into the cement to create natural settings."

Perhaps some inspiration for those habitats came from growing up on the tropical island of St. Thomas in the U.S. Virgin Islands. She was born in New Rochelle, N.Y., but at 7 years old, Nanette moved with her family to St. Thomas.

"It did not have the amenities that the states had," she said. "We had to use powdered milk. There was no fresh milk. And the television station operated only from 4 to 10 p.m. Water was a precious commodity. We had to catch it on the roof. We were always super-conscious of water and really depended on rain."

And she has been conscious of what the island sun can do to your skin. She created a website, www.sunsafely.org to help children and teenagers prevent skin cancer early in life.

Nanette graduated from a small private coed high school and went to Finch because it was close to many museums and she was interested in art. She had visited New York in the summers, staying with her grandmother, who lived in The Bronx. Only weeks after arriving at Finch, Nanette's mother died at 42 years old.

"She was in India on a buying trip for a jewelry shop she owned. She got sick and died in two weeks. My parents had been divorced and I lived with my father. Everyone at Finch was so caring. (She has kept letters of condolence written to her by (the late) Dean Rodney Felder.) In retrospect Finch was always a caring environment. I remember Goldie, who was always on duty to welcome you into the lobby at South Hall (Chalk House)."

Nanette stayed on at Finch from 1972-74, earning her Associate of Applied Science in fine art.

From New York, she moved to Miami to join her family and continue her education. She received her BFA in 1976 and three years later married her husband, Craig. While raising two children, she was teaching during the day and working toward graduate degrees at night, when Craig could stay with the children. She worked with both children and adults in improving their literacy skills. She began writing for special needs children and also founded the Florida Toy Library, which sadly no longer exists. It was a toy-lending library for families in need. She received a grant to publish her "Tri-Lingual Coloring Book," written and illustrated in English, Spanish and Haitian Creole for the culturally diverse city of Miami. And after eight years of night classes, she received her M.A. degree in Adult Education and Human Resource Development from Florida International University.

She realized teaching was her real calling and in addition wrote several books, many geared to sixth and seventh graders to help improve their reading skills. Her "Orphan in America" won the 2014 Kirkus Indie Award for an outstanding novel, published independently. It follows a young boy, taken from an impoverished family living in New York in the early 1900s, and sent to live with a strict farm family in the West.

After more than three decades in Miami, including 25 years of teaching, and with their children grown and gone, Nanette and Craig retired to Tennessee two years ago to the venerable, serene Nashville suburb of Brentwood. Education remains a lifelong love of hers.

"I've always told my children, they can take your money and your home, but no one can take away your education."



Nanette and husband Craig

DONNA MILLER CASEY



World traveler, business executive and humanitarian, Donna gives back in multiple ways to her beloved San Francisco, where she was born and still lives in Pacific Heights, very near the large red brick home where she and her nine siblings grew up. She is the oldest of 10. Nine are alive and live not far from each other. Although she stems from prominent and productive roots that go back five generations, Donna is the first in her immediate family to earn a college degree.

“I started out at Stanford but soon discovered beer, boys and bridge and forgot to go to biology class,” she said. “I had to find another college. My grandmother knew about Finch. She and my grandfather had lived at the Sherry-Netherland during WWII, while my grandfather (Donald Russell) was chairman of the Southern Pacific Railroad and was in charge of moving troops from one coast to the other.

“I loved Finch. I needed a single-sex environment. I made many friends there who are still with me today. And I am happy to be a new trustee of the Finch College Alumni Association Foundation Trust.”

Donna attended Finch from 1967-70, left, got married in August and returned to Stanford, completing her B.A. in English literature in 1971. Divorced some time ago, she has two married sons and six grandchildren, three living in New York and three in San Francisco. They are often the subject of her photography, which she has turned into a career that takes her around the world. She founded Snap-to-it Photography in 2000 and has recorded weddings in Beijing; Florence, Italy, and South Africa. Recently she returned from Paris and Lyon, France, where she was on her sixth trip with the 70-member Russian National Orchestra. They were performing a piece by her friend, composer Gordon Getty, son of oil magnate, J. Paul Getty.

“No one in the orchestra had taken a loyalty oath to Putin,” she said. “I was with them in Moscow three times, in India and at the Vatican, where Carlo Ponti, Jr., was the conductor. His mother, Sophia Loren, was there and the Cardinals were looking at her more than the Pope.”

Back in San Francisco, Donna co-founded the former Bank of San Francisco (now merged with another), has served as library commissioner, executive of San Francisco Beautiful, on the city/county Civil Grand Jury, Conservation Corps, Conservatory of Music, and the AIDS Foundation, to name just a few of her civic causes.

Two very dear to her are the California State Summer School for the Arts (CSSSA)—she is founding chairman and trustee—and the Achievement Rewards for College Scientists Foundation (ARCS). She is a national board member and president of the Northern California chapter.

“ARCS is an all-women’s organization that gives (college) scholarships in partnership with universities across the country,” she said. “Scholars are of all races but they have to be American citizens. Since its founding in 1958, ARCS has given \$50 million in scholarships.

“CSSSA is a 4-week summer residential program for high school students, 15 to 18 years old, based on their achievements. Each summer, 500 students attend classes at CalArts (Institute) near Los Angeles. In more than 25 years, about \$45 million in scholarships has been raised through state and private funding. We raise about \$3 million a year.”

Her faith, Roman Catholicism, is important to Donna and she serves on the International Dominican Foundation and the Knights of Malta.

“I haven’t been to Malta, but I’d like to go,” she said.

She will undoubtedly take her camera.



Donna with daughter-in-law and grandchildren

SUSAN MAU SOONG



Leaving home in Honolulu to travel across the continent to attend Finch College was a happy adventure for Susan.

"I knew my major was going to be education but I was always interested in art and I knew Finch was close to the Whitney and the Metropolitan Museum of Art and I had read in Time magazine about the Finch College Museum of Art," she said. "And I wanted to spend my junior year abroad with FISP (Finch Intercontinental Study Program)."

Susan arrived at Finch in 1967 and graduated in 1971 with a major in education and a minor in art history, where she had been a student of fellow 2015 Cosgrave honoree, Dr. Diane Kelder. New York was well known to Susan. Her mother, the late Karen Mau, had studied at Juilliard and was a violinist with the Honolulu (now Hawaii) Symphony Orchestra. And her parents had taken her and her older brother on an East Coast college tour, but years earlier the family spent a summer traveling around the world. "I think that was inspired by the movie, 'Around the World in 80 Days,' " she said.

Susan grew up in a worldly environment. As a member of the symphony, her mother brought visiting musicians from the mainland and overseas to their home.

"They would stay with us from two weeks to a month which made me very happy because then I didn't have to practice the piano," she said.

Susan's father, the late Chuck Mau, was well known in Hawaii and Washington, D.C. He pursued politics after earning bachelor's and law degrees from the University of Colorado at Boulder. He was elected chairman of Hawaii's Democratic Party and was a leading speaker at Democratic national conventions. Born in Honolulu, he was the first Asian-American to be appointed Deputy Attorney General of Hawaii in 1948, during President Harry Truman's administration, and was the first person of full Chinese ancestry to be named a federal judge for the Territory of Hawaii. One of his goals was affordable housing for citizens after WWII and another was statehood for Hawaii, which was realized Aug. 21, 1959.

At that time, Susan was a fourth grader at the Punahou School, preceding President Barack Obama by 12 years. While at Finch, Susan met Dr. John L. Soong, Jr., who was born in China and graduated from Princeton and Columbia University's College of Physicians and Surgeons. He received his degree in radiology at the same time Susan graduated from Finch.

"We wanted to get married and go on a honeymoon but I had to ask Dean (Kathryn) Harries to be excused from graduation. I was shaking when I went to talk to her. She agreed and they mailed me my diploma."

The couple settled in Honolulu and raised two daughters, one a graduate of Harvard and the other of Barnard and the University of Virginia School of Law. Susan continued her studies, earning a master's degree at California State University, Dominguez Hills. She has been president of the Junior League of Honolulu and served as a docent and trustee for the Honolulu Museum of Art. Museum gift shops feature illustrated booklets complemented by her writing on Hawaiian history and culture. She has received prizes for fiction and poetry from the Honolulu Branch, National League of American Pen Women. At Finch, she instigated the rebirth of the Volunteer Service League.

"My learning at Finch was not all about literature and art," she said. "As Service League volunteers we worked in schools, hospitals, with Puerto Rican families, anywhere we could help.

I appreciated that Finch gave me the opportunity to explore my interests."

That opportunity proved valid in volunteer service back in Honolulu.



Susan, husband John, children and grandchildren

JAMIE LEAMING WATSON



In 1994, Jamie embarked on a major challenge: To create a profession in a male-dominated field. She wanted to establish her own architectural design firm. Not an interior design firm but one in which her employees would work with engineers, electricians, plumbers, carpenters and bricklayers to build offices from the inside to coordinate with what professionals were molding on the outside.

Today, her company, Watson & Associates, is based in New York but has projects all over the world. Her staff includes five men and women, all licensed architects. Although she is not an architect, per se, Jamie thoroughly understands the mechanics of her business. She has a Bachelor of Arts from Finch and a Master of Science in design from Drexel University in Philadelphia. Her years at Finch, 1967-71, coincided with fellow Cosgrave honoree, Dr. Diane Kelder, art history professor.

"I was in a couple of her classes," said Jamie. "She was wonderful and taught us to open our eyes. I loved art history. Finch gave us so much. You learned self-confidence. I am a true believer in women's colleges."

Jamie was born and grew up in a New Jersey suburb of Philadelphia. After graduating from Finch, she went to Charlottesville, VA., to live in a house offered by a Finch roommate, Evelyn Lorentzen Bell. While there she studied fine art at the University of Virginia and also met her husband, Emmett Watson. He was visiting from Connecticut. Before long they were married—43 years ago.

They returned to Virginia but to the eastern shore, a very poor area where she worked as a teacher and he as a social worker. "We wanted to help people and change the world," she said.

Jamie took a break and went to New York to visit her sister, well-known author Barbara Leaming, whose recent book, "Jacqueline Bouvier Kennedy Onassis: The Untold Story," is a New York Times bestseller. While in the city, Jamie interviewed at a large commercial interior design firm and got a job immediately. Her husband joined her in New York, which has been their home ever since. They also have an 18th Century get-away in New Hampshire, a 4-hour drive by car.

After opening her own firm, one of Jamie's first clients was the Tudor Investment Corp., founded by Paul Tudor Jones II, billionaire financier who also created the Robin Hood Foundation, whose mission is to wipe out poverty in New York. She has worked on six Robin Hood projects.

"It has been an incredible experience," she said. "Wealthy clients can help change peoples' lives. Robin Hood has helped formerly incarcerated people enroll in tutoring programs and get jobs."

Inspired by her prestigious clients, including the Alfred P. Sloan Foundation, Viacom, Duquesne Family Capital Management and Single Stop USA, Jamie and her husband are developing their own foundation, Bluecoat, to help New Englanders enjoy better and healthier lifestyles.

Emmett Watson is a pro at fundraising. After 19 years as associate director of planned giving at Columbia University, he continued in virtually the same capacity for MoMA, raising millions for both its capital campaign and endowment fund. He retired last December after 17 years.

"The world is so crazy but so beautiful at the same time," said Jamie. "We all need to give back. If everyone did, the world would be a better place."



Jamie and husband, Craig

1995

Mark Piel
Nancy Azara
Dr. Ronny Cohen
Joannie Plevritis Danielides
Marjorie Schlesinger Deane*
Henrietta Rothblatt Santo
Rita Thompson

1996

Dr. Margaret Maxwell*
Suzanne Ludey Bayley*
Martha Goodyear Mason
Frances Gable Villere

1997

Mary Beth Baker Busby
Susan Grace Galassi
Eileen Bluestone Sherman
Frances Fish Tompkins

1998

Dr. Marshall Mount
Felice Forer Axelrod
Catherine Robertson Claiborne
Kathleen McFadden Guzman
Gene Kincheloe Ritchie
Christa C. Mayer Thurman Sala
Lois Moran Ziegler

1999

Franchelle Stewart Dorn
Francine LeFrak Friedberg
Catharine Cline Hamilton
Marcy Syms Merns
Mary Kim Sull
Mary McDowell Webb

2000

Betty Low
Dr. Carol Garnett Abraham*
Alba Farber Francesca
Doris Buttry Haire
Laura Rollins Hockaday
Dr. Barbara Sbilis Katsos
Diana Gale Zwirn DeMarco

2001

Dr. Sara Arthur
Elba Vargas-Colbert
Elaine Friedman
Thelma Wigoder Frye
Nohra Haimé
Suzanne Pleshette*
Marianna Pelligrini Sottosanti*



2002

Dr. Ardelle Odone Striker*
Ceil Gavin Ainsworth
Mosette Glaser Broderick
Margaret Stewart Hedberg
Jennifer M. Lee-DeLaurentis
Van Negrin
Natalie Skeet

2003

The Hon. Gertrud Sinzheimer Mainzer*
Audrey Schlang Diamond
Helene Weisberg Rudnick Horwitz*
Diana O'Rourke Jacoby
Tennie Bernstein Leonard
Vilma Polakova Wiesenmaier

2004

Robert Diffenderfer*
Darcie Denkert
Marianne Carey Edwards
Hijoo Limb
Anastasia Tsamisis Moss
Margaret Ann Craig Robinson

2005

Dr. Carol A. Hawkes
Freear Pollard Barnwell
Ruth Eriksen Barto*
Sandra Haas Berler
Susan L. Davis
Suzanne Stern Salomon

2006

Dr. Jane Miller Ross
Julia Berwick
Paula DiBenedetto Caravelli
Melanie Rose Cohen
Barbara Ziet Glickman*
Sally Kraftmeyer Hallows

2007

Dr. Charles Bahn
Pamela Dammann Adams
Shea Gordon Festoff
Margaret Stein Nakamura
Susan Embree Parker
Virginia Wattiker Sheerin

2008

Dr. Cynthia Wolk Nachmani
Patricia Flicker Addiss
Hon. Maria DiGiovanna
Audrey Greene
Joyce Nounou Reuben
Yvonne Hammond Roome

2009

Helen Mead Platt
Phyllis Gregory Heard
Susan Wright Hight
Susan Stover Hill
Emilie- Mary Puzio
Dr. Joanne Brecher Rosenberg

2010

Dr. Jeanne Chenault Porter
Stephanie Brody-Lederman
Lady Hilary Winant Glidewell
Antoinette Walker Hamner
Ann M. Holmes
Barbara Richards Pitney

2011

Barbara Robinson Buckland
Denise Mularoni Decker
Nina DiGiovanna LaBruna
Laura Stober Larsen
Marjorie R. Schulman

2012

Priscilla Cole Perkins
Missy Allen
Cheryl Young Deknatel
Julie Vasques Horns
Magda Stark Katz
Barbara O'Hare

2013

Dr. Jacqueline Stuchin-Paprin
Sandy Rowley Colt
Martha Coyle*
Jane Crawford
Marilyn Gelber
Georganne Aldrich Heller

2014

Dr. Katherine J. Hampares
Maria Schorsch Bacinich
Wesley Cullen Davidson
Dale Danson Winston

*Deceased

REMEMBERING
Margaret Wright Maxwell



SEPTEMBER 13, 1913 – APRIL 17, 2007

Time at Finch: 1953-1975

Beloved professor; mentor; friend, adviser
of the Finch College Alumnae Association(reborn), 1993
and the inspiration behind the Jessica Cosgrave Lifetime Achievement
Awards, initiated 1995 and the Finch College Alumnae Association
Foundation Trust, established 2001



CONGRATULATIONS TO THE COSGRAVE HONOREES FROM THE MEMBERS OF THE INEAMUS MELIORA SOCIETY

FREEAR POLLARD BARNWELL

PAULA C. CARAVELLI

DONNA MILLER CASEY

LOIS CHILES

DENISE DECKER

DARCIE DENKERT

CHERYL YOUNG DEKNATEL

REBECCA TABAJOVICH EVEN-ZOHAR

JAMEE JACOBS FIELD

MARGARET REEVES FOREMAN

JULIET MESSIMER GEDE

MARILYN GELBER

NOHRA HAIME

DR. KATHERINE J. HAMPARES

JOAN A. HARIS

DR. CAROL A. HAWKES

PHYLLIS GREGORY HEARD

EVELYN HILTON

JULIE VASQUES HORNS

LAURA STOBER LARSEN

GRAEME MARSTON

MARJORIE "COOKIE" MICHEL

SUSAN HUGHES MICHEL

GENE RITCHIE

CHARLENE RUBIN

SUSIE STERN SALOMON

MARJORIE R. SCHULMAN

VIRGINIA WATTIKER SHEERIN

EILEEN BLUESTONE SHERMAN

MARCY SYMS

FRANCES FISH TOMPKINS

CELIA GOLDBERG ZHRINGER

The Finch College Alumni Association Foundation Trust announced the creation of a new Ineamus Meliora Society in December, 2007 - same name as the original one but with a new definition.

All alumnae who have paid their dues, either annually or lifetime, are eligible to become members.

The minimum gift contribution, over and above their dues, is \$500.00. Members will enjoy special recognition and benefits. Additional funds raised will provide educational grants to women, allowing them to continue their education through scholarships and business exposure.

FINCH COLLEGE ALUMNI SUPPORT TODAY'S COLLEGE STUDENTS THROUGH SEVERAL PROGRAMS:

THE FINCH COLLEGE ALUMNI ASSOCIATION FOUNDATION SCHOLARSHIP is AWARDED TO DESERVING COMMUNITY COLLEGE WOMEN, OVER AGE 22, WHO ARE TRANSFERRING TO A FOUR-YEAR COLLEGE. SEVERAL ARE AWARDED ANNUALLY, VARYING AND DEPENDING UPON ALUMNI AND FRIENDS' DONATIONS. THE AWARD WAS \$2000. BEGINNING IN 2015, THE STUDENT RECEIVES \$2500 UPON TRANSFERRING TO A FOUR-YEAR COLLEGE, AND ANOTHER \$2500 IN THE FINAL SEMESTER. A PANEL OF COLLEGE PROFESSORS, DR. MARY RADDOK, DR. CECILIA MACHESKI AND DR. TRICIA LIN, REVIEW THE APPLICATIONS AND MAKE THE DECISIONS.

THE FREYA MOSKOWITZ STERN SCHOLARSHIP, NAMED IN HONOR OF THE LATE FINCH GRADUATE, WILL BEGIN IN 2015, AWARDING FOUR SCHOLARSHIPS ANNUALLY TO DESERVING TRANSFERRING COMMUNITY COLLEGE WOMEN. THE \$5,000 SCHOLARSHIP AWARDS \$2500 WHEN ENTERING THE FOUR-YEAR COLLEGE AND AN ADDITIONAL \$2500 IN HER FINAL YEAR. THIS SUPPORTS THE STUDENT TO RECEIVE A BACHELOR'S DEGREE.

INDIVIDUAL ALUMNI SCHOLARSHIPS, ARE GENEROUSLY DONATED ANNUALLY BY ALUMNI AND FRIENDS. EITHER ONE SEMESTER OR TWO, THE STUDENT IS GRATEFUL. IT IS OFTEN THE DIFFERENCE BETWEEN MAKING COLLEGE POSSIBLE OR NOT. WE ALL KNOW HOW A COLLEGE EDUCATION IS SUCH A PLUS IN LIFE, TO BETTER CAREER OPPORTUNITIES AND TO ENHANCE PERSONAL SUCCESS.

THE DR. MARGARET MAXWELL SCHOLARSHIP, AWARDED ANNUALLY TO HONOR OUR BELOVED HISTORY PROFESSOR, IS FULLY FUNDED BY THE FINCH FOUNDATION TO HONOR A STUDENT WHO HAS OVERCOME ADVERSITY IN LIFE AND HAS GONE ON TO SUCCEED.

THE BIRCH WATHEN LENOX SCHOOL-FINCH SCHOLARSHIP ANNUALLY PROVIDES PARTIAL TUITION TO A STUDENT AT THIS TWELVE-YEAR SCHOOL. THE SELECTION OF THE RECIENT IS AT THE DISCRETION OF THE SCHOOL'S FACULTY AND IS FULLY FUNDED BY THE BIRCH WATHEN LENOX SCHOOL. JESSICA COSGRAVE ALSO FOUNDED THE LENOX SCHOOL.

SEVENTH GRADER **AMANDA GRIESMAN** WAS AWARDED THE 2014 FINCH COLLEGE-BIRCH WATHEN LENOX SCHOOL SCHOLARSHIP. AN OUTSTANDING STUDENT, SHE ALSO PLAYS THE VIOLIN AND LOOKS FORWARD TO THE TRACK TEAM NEXT SEASON. AMANDA IS A THIRD GENERATION STUDENT AT THE SCHOOL, IN FACT HER PARENTS EMILY AND TODD, MET THERE; SISTER STEPHANIE IS IN FOURTH GRADE. HER AUNT, SHEILA FRIEDMAN HARRIS GRADUATED FROM FINCH COLLEGE. THE ANNUAL EVENT HONORS A CURRENT STUDENT AT THE SCHOOL. JESSICA COSGRAVE ALSO FOUNDED THE LENOX SCHOOL BEFORE ITS MERGER. THE AWARD, WHICH PROVIDES PARTIAL TUITION FOR THE REMAINDER OF HER STUDIES, IS SELECTED BY AND TOTALLY FUNDED BY THE BIRCH WATHEN LENOX SCHOOL FACULTY.

THE SCHOLARSHIP PROGRAM IS CELEBRATING MAJOR 2014 ACCOMPLISHMENTS!

“THE OUTSTANDING FINCH WOMEN SCHOLARSHIP FUND” RAISED \$20,000, THE GOAL FOR THE TWENTIETH ANNIVERSARY OF THE ALUMNI ASSOCIATION. ALL RECIPIENTS OF THE JESSICA COSGRAVE AWARD OF ACHIEVEMENT WERE CONTACTED AND GENEROUSLY DONATED. THIS ENABLED THE FINCH FOUNDATION TO DONATE A RECORD NUMBER OF \$2000 SCHOLARSHIPS TO TWELVE WOMEN!

IN ADDITION, INDIVIDUAL SCHOLARSHIPS WERE DONATED BY:

DR. KATHERINE J. HAMPARES, SPANISH PROFESSOR
MR. LOUIS STERN IN HONOR OF HIS LATE WIFE.

THE FREYA MOSKOWITZ STERN SCHOLARSHIP,
NAMED IN HONOR OF OUR RECENT GRADUATE, WAS ESTABLISHED IN 2015 WITH A MOST GENEROUS \$100,000 DONATION BY HER FAMILY. BEGINNING IN 2015, FOUR \$5000 SCHOLARSHIPS WILL BE AWARDED ANNUALLY FOR FIVE YEARS. THIS INCREASES OUR SCHOLARSHIP AMOUNT FROM \$2000 TO FUTURE STUDENTS RECEIVING \$5000, HALF UPON TRANSFERRING TO A FOUR-YEAR COLLEGE AND ANOTHER \$2500 DURING HER LAST SEMESTER. SHE WILL RECEIVE A BACHELOR’S DEGREE.

OTHER SCHOLARSHIP HAPPENINGS:

CALLED FINCH SCHOLARS, TWO RECIPIENTS OF OUR SCHOLARSHIPS HAVE BEEN INVITED TO JOIN THE BOARD OF TRUSTEES:

DANIELLE JOBLONSKI GRADUATED FROM NORWALK CT COMMUNITY COLLEGE
AND YALE UNIVERSITY.

ZINEB BOUISY GRADUATED FROM LAGUARDIA COMMUNITY COLLEGE, NY AND IS STUDYING
AT THE GROVE SCHOOL OF ENGINEERING AT CITY COLLEGE, NY.

WE ARE HONORED THAT A RECIPIENT OF OUR SCHOLARSHIP HAS GENEROUSLY DONATED TO THE FINCH SCHOLARSHIP PROGRAM. DR. SYBILLE NGO NYECK IS DOING WELL IN HER CAREER AS A COLLEGE PROFESSOR AND SHE WANTS TO ENCOURAGE OTHER WOMEN. SHE APPRECIATES HOW IT HELPED HER. SYBILLE GRADUATED FROM LAGUARDIA COMMUNITY COLLEGE, SWARTHMORE COLLEGE, AND UNIVERSITY OF CALIFORNIA WITH A PH. D.

IN 2014 A RECORD NUMBER OF 12 FINCH ALUMNI FOUNDATION SCHOLARSHIPS WERE AWARDED:

Each \$2000 scholarship will support a community college woman over the age of 22 to transfer to a four-year college and receive her bachelor degree.



Peishan Chang arrived from China three years ago without speaking English, and now she has also mastered the language of chemistry and professional science. Transferred from Kingsborough Community College in Brooklyn to Smith College to study chemistry and will apply for internships in applied research.



Kimone Coley graduated from Westchester Community College as a mother of two, a member of Phi Theta Kappa Honor Society, Admissions Ambassador program and active in the Benevolence Community Outreach Ministry. She received the Vassar Summer Exploring Transfer Scholarship, proudly managing her family and classes, achieving a 3.85 grade average. Because her high school psychologist supported her so, Kimone's career goal is to be a psychologist. Her family of four has moved to Smith College.



Raised in Brooklyn public housing developments, **Vivian Figueroa** left home at 14. Her government career began with New York City Housing Authority. With only a High School Equivalency Diploma, Vivian entered evening classes at Bergen Community College, NJ. She graduated with an Associate Degree in the Paralegal Program, maintained a 3.9 grade average, PTK Honor Society, all while working full time. She transferred to Southern New Hampshire University to pursue a career in the legal field, studying online college courses, while continuing to work full time with the Housing Authority. Vivian received the Dr. Katherine Hampares Scholarship.



Her mother's exhibiting selfless care as a neo natal nurse in Poland drew **Monika Jusiega** to the medical field. She transferred from Bergen Community College with an Associate's Degree in Natural Science and Mathematics, to William Paterson University to pursue a bachelor's degree of science in nursing. Monika has worked as a medical assistant in several hospitals. Now at a four-year college, she is adding business courses for a career in business. She sees a future in pharmaceutical trials and sales of cutting edge medical equipment.



Derya Yildirim Lane was recognized by her college, Norwalk Community College, CT, as a Woman of Distinction and Promise. Breaking away from her life in Germany, she joined an au pair program to which allowed her to live in the United States and take community college classes. Despite a 55-hour work schedule, she joined the Speech Club, was editor of The Voice newspaper, joined debate teams, all of which led to an internship working for Mayor Harry Rillings in Norwalk. A born leader, Derya became very active in the PTK Honorary Society, and volunteered to participate in environmental projects and participated in peer mentoring. Derya received the Freya Moskowitz Stern Award. Recently married, Derya transferred to the University of Pennsylvania to study law.



Christina Mihailescu's life took a turn with an opportunity with a cruise liner, her first trip to the United States from Romania. As a mother of two, after a gap of 17 years of attending school, she enrolled in LaGuardia Community College, working part time at a Met Life paid internship. At LaGuardia, she took courses in management, marketing, business law, accounting Microeconomics, all to learn different aspects of business. She has declared a major of "Sustainable Development", a newer economic focus that offers finance students a better understanding of how nations around the globe can maintain their natural resources. Christina now attends Columbia University and made Dean's List first semester.



Justine Benie N'Gozan arrived from the Ivory Coast of Africa not speaking English, quickly became a member of three honorary societies at Housatonic Community College in Bridgeport, CT and is listed in *Who's Who Among Students in American Universities and Colleges*. A straight A student, Justine always wanted to know how Mathematics and Science could be applied to real life. She worked on a project for NASA and the National Science Foundation. In addition, Justine is involved in community activities: volunteering at her church soup kitchen and cleaning up local parks. She transferred to The University of Texas in Austin. After completing studies in Actuarial Science, Justine looks forward to opening her own business.



Shaumane Paulk knows how different the dynamics and policies of the health care system can be, both from her family experiences and from volunteering in health care services. She has seen how devastating losses can affect a family. Shaumane wants to be an advocate and champion for those who want better. She transferred from Norwalk Community College, CT to Ohio State University to study for a career in Social Work. She is currently finishing an internship with Breakthrough Options For Families, Inc. where she services two families. Shaumane is a member of PTK Honor Society and National Society of Leadership and Success.



From a young age, **Cassie Lynn Reed** wanted a career in the sciences. She pursued this with a 2006 degree and career in dental hygiene. Leaving this stable job to obtain more education was intimidating. After Ulster County Community College, NY, Cassie transferred to the University of Rochester to study microbiology and molecular genetics. She has been honored to participate in the Chancellor's Education Pipeline Biomedical Research Award Program by participating in microbiology and genetic research at Stony Brook University. Cassie's goal is medical school to study pathology, infectious diseases, genetics and oncology.



Gabriele Rosado never saw college on her radar during high school. Exhibiting artists in galleries and expositions were more to her liking. Suddenly, she decided to turn her life around and enrolled in Hudson County Community College. She made Dean's list and joined the honor society. Life now is focusing on three plans. First: become a published writer of fiction, nonfiction, poetry and stage plays. Second: a career in theater; she has taken courses in playwriting and acting. Third: a career in film as filmmaker, screenwriter and actor. She entered Columbia University, a dream come true. We'll watch for Gabriele Rosado in bright lights!



While studying Biotechnology at Queensborough Community College, NY, **Eun Jung Shin** had the opportunity to partake and present her findings at several symposiums for Northeast Regional Meetings at Yale, Columbia and the City College of New York. She participated in many research internships at the Department of Environmental Protection and technical research projects with individual professors. She is passionate about laboratory research. She did research at Hope University in Michigan. Eun Jung's goal at Queens College is to study STEM as a major, along with Bioengineering, and eventually to earn her Ph.D.

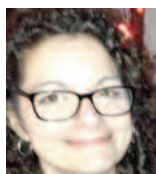


After a financially debilitating divorce and the loss of her job of ten years, **Emilie Alexandra Unterweger** enrolled at the Borough of Manhattan Community College where she discovered she had a real hunger for learning. Emilie found sitting in a classroom discussing concepts and exchanging ideas with professors and other students was an incredible experience. Now Emilie is excited to be a writing major at The School of General Studies of Columbia University, focusing on poetry and nonfiction. She received the Dr. Margaret Maxwell Award. Emilie hopes to make a difference and believes education and knowledge is key to success.

Finch Scholarships are well deserved by this incredible group of outstanding women! They very much appreciate your donations to support their educations.

READY FOR SUCCESS

AFTER COLLEGE GRADUATION, OUR STUDENTS CONTINUE TO DISTINGUISH THEMSELVES IN THE WORKPLACE. HERE'S A BRIEF SAMPLE.



Cathy Schmitz

A graduate of Bard College, Cathy continues to live her passion. Currently, she coordinates literary events in conjunction with the Poughkeepsie Art Council and publishes the Council's weekly e-newsletter as well. As Cathy frankly admits, "there's never a dull moment" as the Managing Editor of her own literary magazine, LAUGHING EARTH PRESS.



Danielle Jablonski

After a 2014 graduation from Yale University, Danielle now finds herself in the world of "high tech," as a business development manager at DOOR3, a boutique software consulting firm that designs and builds enterprise business applications for web, social, and mobile media. Clients include Fresh Direct, WWE, and The Museum of American Natural History.



Sybille Ngo Nyeck

We first met Sybille when she was a student at Swarthmore College. She continued her studies and earned her Ph.D at UCLA. Currently, Dr. Sybille Ngo Nyeck is not only a professor of political science at Clarkson University but a respected historian and published author in her field.



Lisa Fredsall

We knew Lisa during her years at the University of Connecticut, working toward a graduate degree in social work. After her 2010 graduation, she and her family relocated to North Carolina, where Lisa soon began working for a social service agency, October Road. Today, Lisa is the company's Clinical Director! Lisa is now pursuing her second license in clinical addictions in the state of North Carolina.



Maki Kato

A Wellesley Graduate, Maki now resides in Tokyo. Trained as a social researcher, Maki works for a Japanese "think-tank" with projects that focus on improving both education and employment.



Annamaria Havrillova

Upon graduation from William Patterson University in New Jersey, this business major relocated to Florida to begin a career in corporate sales. She continues to forge ahead in the business world as she earns her MBA.



Moreen Tonny

Our May 2015 Graduate from Mt. Holyoke, Moreen heads west this summer to begin "her brilliant career" at the San Francisco global consulting firm, Accenture. Moreen will serve as an analyst in the company's management consulting and development program.

REFLECTING ON THE PAST AS WE SHAPE THE FUTURE

Without a doubt, our annual Jessica Cosgrave Awards Evening allows us all to luxuriate in nostalgia from "long ago and far away." Each year we reminisce with dear Finch friends, and for a few short hours, we recapture the thrill of that remarkable experience on 78th Street. Sounds corny, but we all cherish this escape to a magical place that for one night makes us feel eighteen, invincible, and absolutely determined to become the world's next wave of "movers and shakers" all over again. Inevitably, the hours pass, and we're back in reality. Yet, we uniformly depart, in awe of one, single truth. Though relatively few in number, throughout the last sixty-some years, so many of our ranks managed to leave an indelible "Finch stamp" on the fields of theatre, film, television, finance, publishing, music, dance, art, politics, education, fashion, business, community service, medicine, and law....just to name the obvious.

The question remains. "What was the "Finch secret?" Of course, we credit an outstanding faculty, an impressive administration, and our glamorous well-appointed facilities- not to mention the wealth of opportunities outside our doorstep. Still, lots of colleges boast talented teachers, savvy leadership, and state of the art equipment. Furthermore, Finch was not the only college ever to use a big city's cultural institutions to groom its students. What then set Finch apart?

Simply put, we were small. How much easier for a Dr. Striker, a Dr. Ellis, or a Dr. Maxwell to identify the promise of a student in a classroom of twelve, nine, or even five. Granted, our tiny numbers did not allow us to escape constant scrutiny (no playing hooky, for sure), but we flourished. After all, who doesn't love personalized attention from revered giants in their field? These giants were insistent that we fulfill our potential and were the first to suggest opportunities outside the classroom, call a colleague on our behalf, or write a letter of recommendation with a very personal touch. (As Director of Admissions, Sally Arthur knew all the women (and their talents) well and was always on the "look-out" for the next great opportunity available for that motivated Finch student.)

Of course, "small" has its downside. Financial support from alumnae is critical to every college's financial health. Logically, a larger graduate pool means more avenues for future funding. Essentially when the "chips were down," we simply ran out of avenues to gather more chips.

However, never underestimate that potent combination of passion and talent. The doors closed, but in its place, a determined Finch community created a Foundation that through its financial assistance is helping women complete their education at Swarthmore, Yale, Hunter, Mount Holyoke, Wellesley, Bard, Smith, and the list goes on. (Yes, these are the same schools that often stuck their noses in the air when they heard the name, Finch. To which we still reply, "Sticks and stones.... but we know how to get a job done!") Simply read about our scholarship winners' achievements, and it is no exaggeration to say that we are assisting the next wave of world leadership.

So, now, on this glorious Jessica Cosgrave Evening when we recognize the breath-taking success stories of Finch alumnae, we humbly acknowledge that we are now the experts in our fields. Like our own Finch heroes from many years ago, we have the chance to befriend, advise, encourage, and help ambitious and hopeful women as they pursue their career dreams. A

Finch Mentor is a friend, confidante, cheerleader, and professional resource. Luckily, in today's world one needn't be in the same city, state, or even the same country. Emails, texts, Skype, and Google Hangouts bring everyone together in an instant. (Of course, an old fashion telephone call and hand-written note still work like a charm.) Yes, it's true. Each scholarship winner has her own school affiliation, but on her campus, she is just one of many. For us, she is a new star among our ranks and a member of the next generation to leave that "indelible Finch stamp." Once more, small but mighty makes all the difference.

**Eileen Sherman and Laura Larsen chair the committee for Finch Mentors. If you would like to share your "know how," and become a Finch Mentor to a Finch Scholarship Winner, please be in touch.

Eileen: kcne@juno.com Laura: lsarsen2@msn.com

CONGRATULATIONS
AND
OUR VERY BEST WISHES TO
THE 2015 JESSICA COSGRAVE AWARD RECIPIENTS

DR. DIANE KELDER

NANETTE LAMPL AVERY

DONNA MILLER CASEY

SUSAN MAU SOONG

JAMIE LEAMING WATSON

FROM THE JESSICA COSGRAVE AWARDS COMMITTEE

VIRGINIA WATTIKER SHEERIN, CHAIR

CEIL GAVIN AINSWORTH

DENISE MULARONI DECKER

CHERYL YOUNG DEKNATEL

EILEEN BLUESTONE SHERMAN

THE FINCH COLLEGE ALUMNI ASSOCIATION FOUNDATION TRUST
BOARD OF TRUSTEES
PROUDLY CONGRATULATES THE 2015 OUTSTANDING HONOREES:

and Successful Graduates Who Have Applied Their
Well-Rounded Finch College Education to Enhance
Their Own Lives and That of Others

DR. DIANE KELDER

NANETTE LAMPL AVERY

DONNA MILLER CASEY

SUSAN MAU SOONG

JAMIE LEAMING WATSON

Foundation Board of Trustees Members:

Ceil Gavin Ainsworth, *Co-Chair*

Margaret Stewart Hedberg

Dr. Sara Arthur, *Co-Chair*

Laura Hockaday

Zineb Bouizy *

Danielle Jablonski *

Donna Miller Casey

Barbara Sbilis Katsos, Esq.

Joy Correge

Magda Stark Katz

Wesley Cullen Davidson

JoAnn Cricchio Kubat

Susan Davis

Susan Embree Parker

Denise Mularoni Decker

Marjorie R. Schulman

Cheryl Young Deknatel

Virginia Wattiker Sheerin

Alba Francesca

Eileen Bluestone Sherman

Wendy Glickstein

Frances Fish Tompkins

Audrey Greene

Lois Moran Ziegler

** Finch Scholarship recipients appointed to the Board of Trustees*

THANK YOU TO OUR SUPPORTERS.
WE WISH TO EXTEND A WARM THANK YOU
TO ALL OF OUR JOURNAL ADVERTISERS AND THOSE
WHO CONTRIBUTED TO UNDERWRITING THE EVENING.

CEIL GAVIN AINSWORTH
DR. SARA ARTHUR
NANETTE AVERY
FELICE FORER AXELROD
BEACH CAFE
FRANK J. CARNABUCI III
DONNA MILLER CASEY
LOIS CHILES
CATHERINE R. CLAIBORNE
LIZ COLIN
WESLEY CULLEN DAVIDSON
DENISE MULARONI DECKER
CHERYL YOUNG DEKNATEL
FINCH ALUMNI OF SOUTH FLORIDA
WENDY GLICKSTEIN
DR. KATHERINE J. HAMPARES
LAURA ROLLINS HOCKADAY
ANN M. HOLMES
BARBARA H. KATSOS, ESQ.
DR. DIANE KELDER
LAGUARDIA JUNIOR COMMUNITY COLLEGE

LAURA STOBER LARSEN
LEX PACK & SHIP
FRANCINE LEFRAK
LONDON TOWN CARS
MILLER AND MILLOMENT, CPAs
GINGER RUNES NAJAR
HIDEAKI NAKAMURA
MARGARET STEIN NAKAMURA
SUSAN EMBREE PARKER
DR. NELLY E. SANTOS
EILEEN BLUESTONE SHERMAN
MARJORIE R. SCHULMAN
VIRGINIA WATTIKER SHEERIN
LOUIS J. STERN
FAMILY OF FREYA MOSKOWITZ STERN
SUSAN MAU SOONG AND FAMILY
THE BOB HARDWICK SOUND
RITA J. THOMPSON
FRANCES FISH TOMPKINS
JAMIE LEAMING WATSON
LOIS M. ZIEGLER



The Finch College Alumni Association Foundation Trust
Board of Trustees

thank

Mr. Louis J. Stern and Family

for creating the

Freya Moskowitz Stern Scholarship Fund

in October, 2014.

Their gift will enable more deserving adult students
to accomplish their educational goals.

We are most grateful for their generosity and dedication.

Congratulations

to

Our Dear Friend...

Jamie Leaming Watson

With Love...

Evelyn Lorentzen Bell

Margaret Ferree Brown

Ann Holmes DiLuglio

Virginia Anderson Merriman

*In Memory of
Freya M Stern*

My Beloved Wife,

Irreplaceable

Mother and Grandmother

I Will Always Miss You,

*Your Loving Husband
Laddie*

LaGuardia Community College
President Gail O. Mellow
Faculty, Staff and Students

are
proud to support the

Finch College Alumni Association Foundation Trust

at the

2015 Cosgrave Awards Reception and Dinner

honoring

Dr. Diane Kelder
Nanette Lampl Avery
Donna Miller Casey
Susan Mau Soong
Jamie Leaming Watson



31-10 Thomson Avenue • Long Island City, NY 11101
www.laguardia.edu • 718/482-7200

*In Memory of
Our Mother
Freya M Stern*

*Some of her Happiest years
Were At Finch*

We Will Always Miss You,

*Jonathan Stern
Jennifer Kaplan*

Congratulations to my inspiration

Dr. Diane Kelder

Love

Francine LeFrak

samesky.com



Same Sky
EMPOWERING WOMEN. CHANGING LIVES.

10% of all gala dinner jewelry sales will be donated
to Finch College Alumni Association Foundation Trust

Congratulations
to the
2015 Jessica Cosgrave Lifetime Achievement
Honorees

DR. DIANE KELDER

NANETTE LAMPL AVERY

DONNA MILLER CASEY

SUSAN MAU SOONG

JAMIE LEAMING WATSON

Lois Chiles

In Loving Memory



Martha Coyle

A kind and special friend

Frances Fish Tompkins

**Congratulations
to the 2015 recipients of the
Jessica Cosgrave Award**

Dr. Katherine J. Hampares

Dr. Nelly E. Santos

Cheryl Young Deknatel

Susan Cole

Gail Katz Worth

Nancy Z. Holland

Maria Schorsch Bacinich

Finch Alumni of South Florida

Congratulations to

DONNA CASEY

for her deep commitment to her community
through tireless volunteer work!



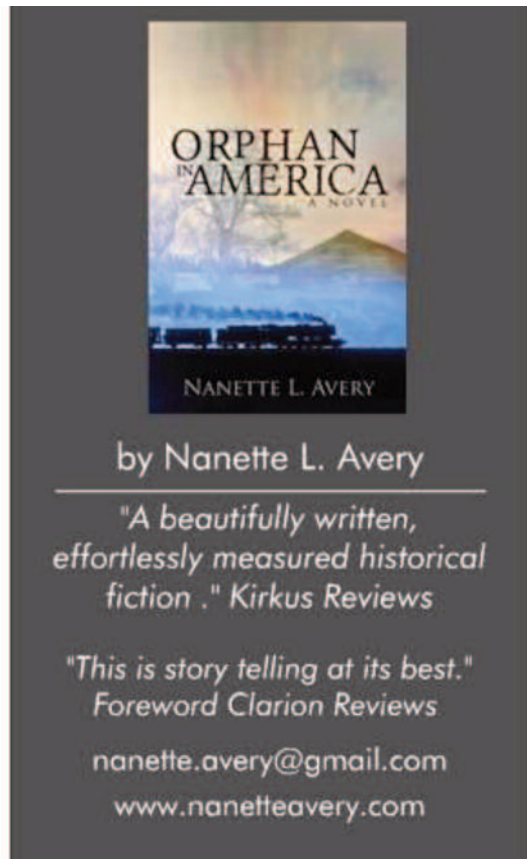
With love and admiration from her two sons,
two daughters-in-law,
and six grandchildren!

2015 Naples, Florida Reunion Friends

Congratulate Jessica Cosgrave Award honorees:

Dr. Diane Kelder

**Nanette Lampl Avery
Donna Miller Casey
Susan Mau Soong
Jamie Leaming Watson**



FELICE FORER AXELROD

NON-PROFIT CONSULTING

917-974-9144

FELICEAXELROD@GMAIL.COM

The FINCH NOTE CARDS

were designed by Margaret Stein Nakamura,
class of '72.

They feature Finch College's beautiful beaux-arts facade,
printed in sepia green on cream vellum.



Set of 10 Cards with
matching #10 envelopes
costs \$25.00 at the
COSGRAVE AWARDS or
\$30 by mail order. All net
proceeds are donated to the
Margaret Maxwell Memorial Fund.

Please make checks payable to:
FINCH COLLEGE ALUMNAE
ASSOCIATION FOUNDATION TRUST
(write MMMF on memo line).

Sent orders to:
M. Nakamura at:
145 East 16th Street, Apt. 16K
New York, NY 10003

The Finch College
Alumnae Association
would like
to thank Headmaster

Frank J. Carnabuci III and the Birch Wathen Lenox School

for their gracious welcome
each time we conduct our
quarterly business meetings at
210 East 77th Street.

VIRGINIA W. SHEERIN
DIRECTOR

ESTABROOK CAPITAL MANAGEMENT LLC
900 THIRD AVENUE, 10TH FLOOR
NEW YORK, NEW YORK 10022

212.605.5660
FAX: 212.605.5503
VSHEERIN@ESTABROOKCAP.COM

STRAUSMEDIA
your neighborhood news source

• • •

Ceil Ainsworth
Associate Publisher

phone: 212-868-0190 • fax: 212-868-0198
ceil.ainsworth@strausnews.com
www.strausnews.com

PHONE: (772) 231-0760
FAX: (772) 231-0332
E-MAIL: WCDWRITE@AOL.COM
WEB: WESLEYCULLENDAVIDSON.COM

Wesley C. Davidson
FREELANCE WRITER

1515 GRACEWOOD LANE + VERO BEACH, FL 32963

Tel: (212) 421-0307
Fax: (212) 838-5026



Law Offices of
Barbara H. Katsos, P.C.

59 East 54th Street
Suite 52
New York, NY 10022

email: bkatsos@katsoslaw.com
http://www.katsosnylaw.com

T

Best wishes

Frances Fish Tompkins
205 East 78th Street
New York, New York 10075
(212) 744-2008
Cell (917) 992-9111

Frances

Carlsmith Ball LLP
A LIMITED LIABILITY LAW PARTNERSHIP

LAURA S. LUCAS
MANAGING PARTNER
LLUCAS@CARLSMITH.COM
808.523.2552
1001 BISHOP STREET, SUITE 2100
HONOLULU, HI 96813
CARLSMITH.COM



Marjorie R. Schulman, CLU
Financial Services Professional*



New York Life Insurance Company
Licensed Agent
420 Lexington Avenue
15th Floor
New York, NY 10170
Bus. 646 227 8636 Cel. 917 612 9889
Fax 646 227 8198
mschulman@ft.newyorklife.com

*The Company You Keep**

RITA J. THOMPSON
VIDEO PRODUCER

RTRJT@AOL.COM

SINCE 1968



DAVE GOODSIDE

DAVEBEACH@NYC.RR.COM
212, 988.7299

1326 SECOND AVE. NYC 10021
CORNER OF EAST 70TH ST. & 2ND. AVE.

The Bob Hardwick Sound Sensation



767 Lexington Avenue; Suite 404
New York, NY 10065

Phone: 1.212.838.7521

Fax: 1.212.838.7611

Email: info@bobhardwick.com



MILLER & MELLOMENT CERTIFIED PUBLIC ACCOUNTANTS

LAURENCE P. MILLER, CPA

19TH FLOOR
575 LEXINGTON AVENUE
NEW YORK NY 10022

TEL: 212.651.4440

CELL: 971.363.2439

FAX: 212.661.0313

ONYXLY@AOL.COM



LONDON TOWNCARS

of New York

Family Owned & Operated Since 1959

800.221.4009 • www.LondonTownCars.com



Lex Pack & Ship

Packing ✦ Domestic & International Shipping ✦ Private Mailbox Services
Boxes & Packaging Supplies ✦ On-site Shredding Services ✦ Fax Service

954 Lexington Ave (69th & 70th) NY 10021 ✦ (212) 288-4425



*Is there a Brass Player
in your life?*

www.charlescolin.com
Specialists in Brass & Jazz
Method books

Browse on Ebay:
"Charles Colin Publications"

REALLY NEAT!

for an organized environment



Wendy Glickstein

Professional Organizer

Phone: 212.249.5228

Cell: 917-499-4809

E-mail: wendy@reallyneatorganizer.com
www.reallyneatorganizer.com

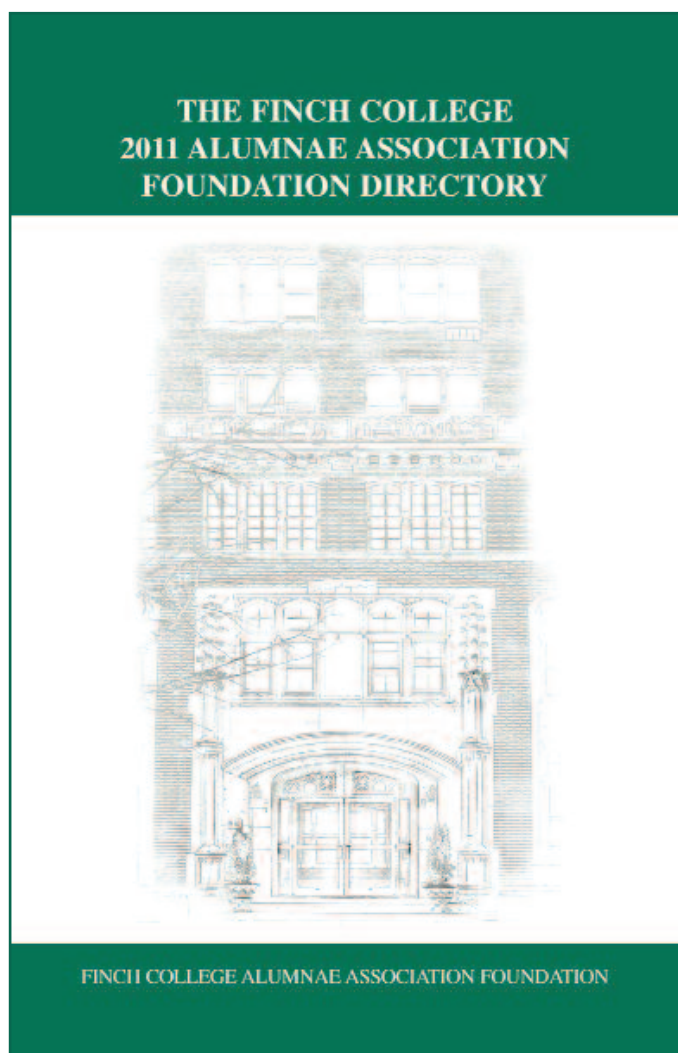
SEASONS TO TASTE COOKBOOK: MENUS AND MEMORIES FROM HOME AND ABROAD



BY BETTY KING
Finch 1953

Available at:
www.seasons2taste.com
and at
www.amazon.com

Reconnect with your Finch friends!



When you pay your annual or lifetime dues as a benefit
of membership, you will receive your personal copy of the
Finch College Alumni Association Foundation Trust Directory

Participate and Volunteer!!

Please be sure to send us your e-mail address if you have not already done so.

We never share this information.

www.finchcollege.org

or e-mail us at: infor@finchcollege.org